

# COMMUNITY IMPACT REPORT

BASED ON 2025 OUTCOMES. BUILDING A HEALTHIER FUTURE TOGETHER.

A healthy community starts with people who look out for each other. Caring for your health, encouraging a neighbor in need and choosing healthy habits all make a difference. In 2025, thousands of people across our region made choices that strengthened their well-being and the well-being of those around them.

## What is community impact?

Community impact reflects Genesis HealthCare System's ongoing commitment to improve your health and well-being.

Using what we learned from the Community Health Needs Assessment, we focus on the challenges that matter most.

Through programs, partnerships, education and outreach, Genesis joins with community members and local organizations to reduce barriers to care and support healthier living across our region.

This report highlights the ways these efforts drive lasting change across our region.

Community impact includes:

- Expanding access to care through financial assistance, access and support services
- Promoting prevention and early detection through education, outreach, health screenings and chronic disease support
- Collaborating with community partners to address priority health needs and social factors that influence your well-being

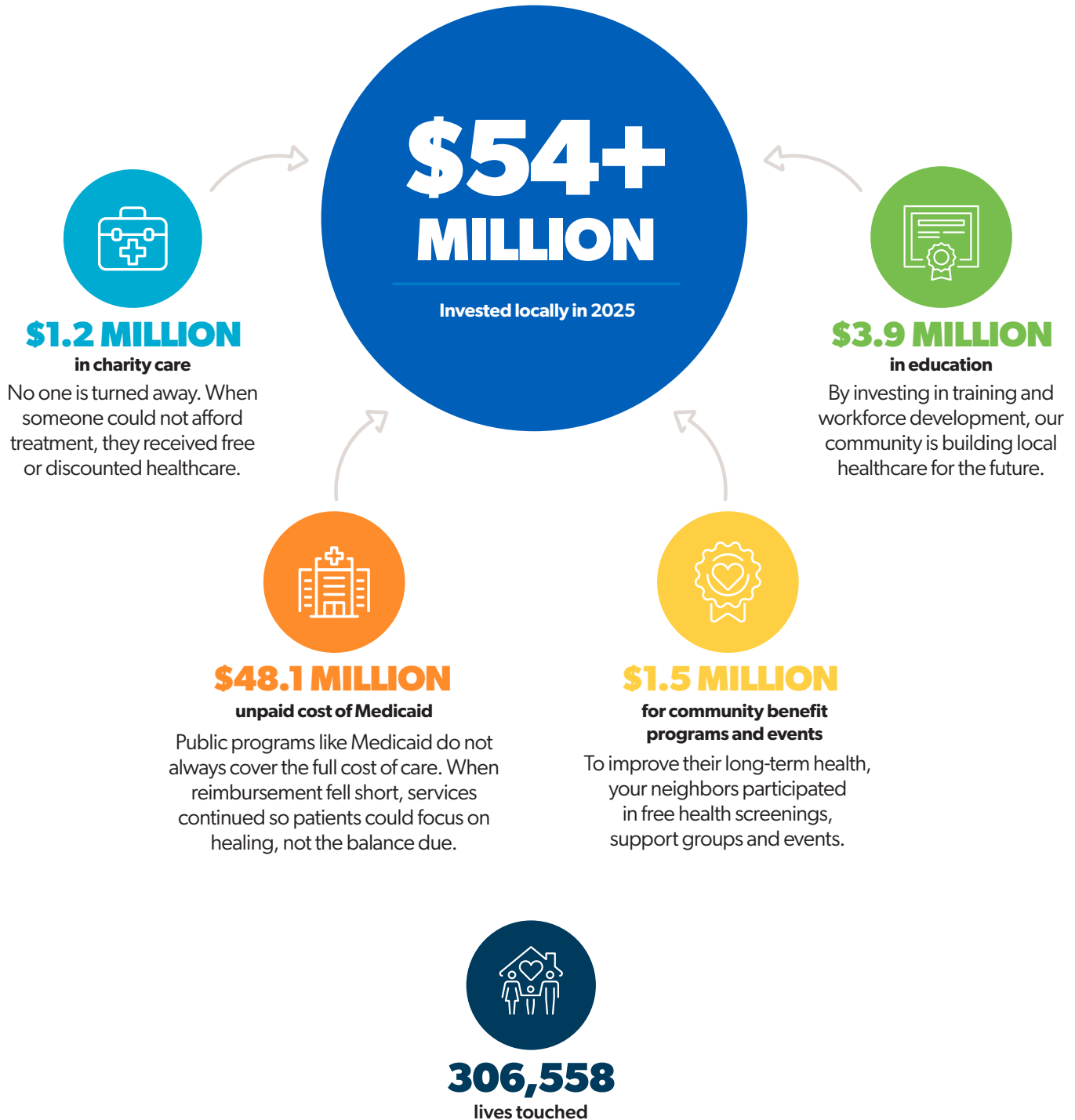


# COMMUNITY BENEFIT IN 2025

## Health within reach for every neighbor

Every family deserves a healthy life. In 2025, Genesis helped more people get care, education and support to live healthy lives throughout Muskingum, Coshocton, Guernsey, Noble, Morgan and Perry counties.

As a nonprofit healthcare provider, our community benefit programs offer education, outreach and services that help people overcome barriers to health and live healthier lives.



Behind every number is a neighbor who participated in Genesis community benefit programs. These services go beyond medical care to support health and social needs, helping families build healthier, more secure futures.

Genesis is true to its mission to “serve our community by helping each person achieve optimal health and well-being by providing compassionate, exceptional, and affordable healthcare services.”



# PARTNERING WITH OUR COMMUNITY FOR BETTER HEALTH

Healthy communities start with the people who live there. Across Southeastern Ohio, residents care deeply about the health of their families and neighbors.

To strengthen these efforts, Genesis HealthCare System partners with the Southeastern Ohio Health Improvement Collaborative, which includes the Zanesville-Muskingum, Perry, Noble and Morgan County Health Departments. Together, we use community feedback to identify and prioritize the health needs that matter most.

## Listening to our communities

In 2024, residents, community partners and public health leaders participated in the Community Health Needs Assessment (CHNA) survey to identify the top health needs in our region. Their input guided the development of our 2025–2027 Community Health Improvement Plan (CHIP). The plan focuses on the health needs that matter most in Southeastern Ohio.

## Genesis priorities for 2025 to 2027

Based on this feedback, we identified three priority areas where we can work together to make the greatest impact:

- Behavioral health**
- Chronic disease**
- Access to healthcare**

These priorities guide our efforts to build a healthier, better future for Southeastern Ohio.



*Find out what needs you said matter most. Scan the code with your phone to read the CHNA or visit [genesishcs.org/chna2024](https://genesishcs.org/chna2024).*



*See how you are shaping a healthier community. Scan the code to read the CHIP or visit [genesishcs.org/chip2025](https://genesishcs.org/chip2025).*



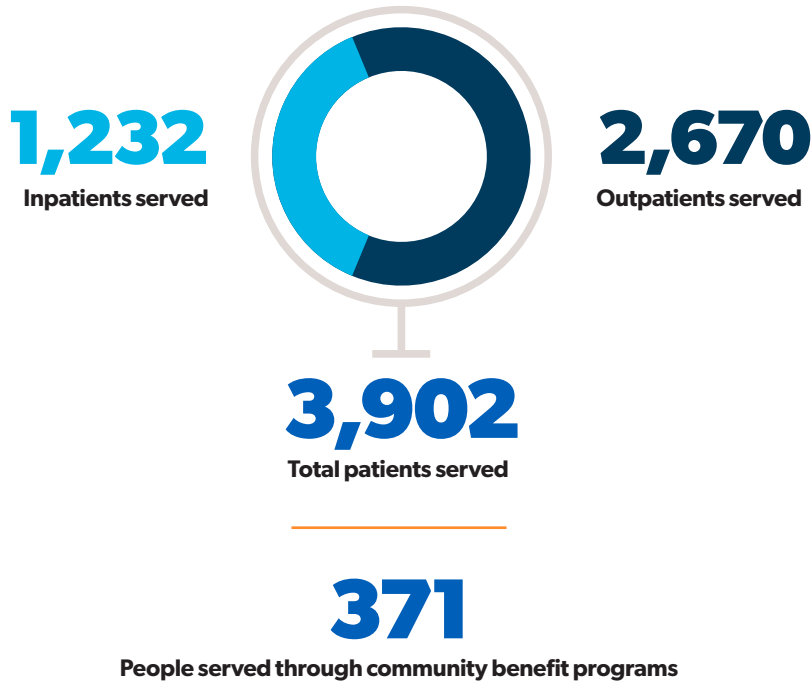
**Public Health**  
Prevent. Promote. Protect.

**Zanesville-Muskingum, Perry, Noble and Morgan County  
Health Departments**

# THE FUTURE OF BEHAVIORAL HEALTH

## Expanding access for our community

Genesis provides compassionate behavioral health services for people looking for support. Reaching out is an important step for yourself and those you care about. Our team helps connect patients with the right care, whether it is inpatient, outpatient or support during a difficult time.



### Behavioral Health Connection

To help people connect to local care, Genesis and Allwell Behavioral Health Services opened a call center.

Behavioral Health Connection, started in 2025, offers help with non-urgent mental health and substance use needs. The call center is available Monday through Friday from 8 a.m. to 4:30 p.m. to Muskingum County residents, with plans to expand to multiple counties. Patients can call 740-455-8028 or be referred by their physician.

### Thanks to our community partners, as we work together to improve behavioral health



Department of  
Behavioral Health



MENTAL HEALTH AND  
RECOVERY SERVICES BOARD  
Serving Coshocton, Guernsey, Morgan,  
Muskingum, Noble, and Perry Counties



### Youth Crisis Stabilization Unit

We began construction for the Genesis Youth Crisis Stabilization Unit in 2025. Opening in spring 2026, this new facility will offer short-term residential care for youth who are experiencing a behavioral health crisis.

The center will provide support close to home and help reduce the need for hospitalization or placement outside the county. It will also connect youth to ongoing support as part of their care plan to help reduce future crises.

In collaboration with the Muskingum Area Mental Health and Recovery Services Board, Genesis was awarded American Rescue Plan Act grant funding through the Ohio Department of Behavioral Health, making this project possible.

# IMPROVING LONG-TERM HEALTH IN OUR COMMUNITY

Chronic disease remains a major health challenge in Southeastern Ohio. In our recent community health survey, 55% of people said that chronic disease is a top concern.

Genesis supports prevention, early detection, education and ongoing local care for chronic health conditions, including heart disease, Chronic Obstructive Pulmonary Disease (COPD) and cancer.

2025 community impact

## \$92,454

Invested in chronic disease programs

## 5,191

People served

### Providing cancer care close to home

In 2025, the Genesis Cancer Care Center celebrated 10 years of high-quality cancer care close to home, providing nationally accredited services and a WrapAround Care model that supports patients throughout their treatment journey.

### Stroke care for fast, high-quality treatment

Genesis earned many American Heart Association stroke awards in 2025, including Target: Stroke Honor Roll Elite, Target: BP Gold+, Target: Type 2 Diabetes Honor Roll and the Rural Stroke Gold Award.

### Preparing communities for heart emergencies

From lifesaving moments to ongoing care, these programs provide training and support:

- **AED loaner program**  
Automated External Defibrillators (AED) can be borrowed by community groups hosting events. Training is available. Call 740-455-7571.
- **Heart Alliance**  
Provides AEDs and training to schools, libraries, police departments and other community locations across six counties.
- **New Hopeful Hearts Support Group**  
Support is available for people living with heart disease or recovering from a heart event. For details, call 740-455-7571.



*Emily J. Brawner, D.O.*  
*Pulmonary/Critical Care Physician, Genesis Lung Center*

### Expanding lung care and early detection

Testing, evaluation and treatment help you manage your lung health:

- **Pulmonary services in Coshocton**  
Lung specialty care expanded to Coshocton to provide local care to everyone who calls the area home. For appointments, call 740-722-9524.
- **Early lung cancer detection**  
Improved screening helps find lung disease sooner, which typically leads to better outcomes. Visit [genesishcs.org/low-dose](https://genesishcs.org/low-dose).
- **Genesis Black Lung Program**  
Screening and treatment are available for current and former coal miners. For details, call 800-322-4762.



Callie E. Crider, D.O.  
Obstetrician & Gynecologist  
Genesis OB/GYN Group



# MORE ACCESS. STRONGER COMMUNITY.

When more options are within reach, it's easier to get care and make choices that support your well-being.

However, many patients face challenges in receiving healthcare, such as economic instability, limited access to healthy food, unstable housing or transportation to appointments. These factors, called Social Determinants of Health, affect up to 80% of a person's well-being.

Genesis care teams help patients move past these barriers and build healthier lives. When patients are healthy, the entire community grows stronger.

## 2025 highlights

# 39,316

Patients were asked about challenges in receiving care

# \$4.9 MILLION

Nearly \$4.9 million was invested by Genesis to improve access to care

# 128,215

Community members were supported



### Genesis Food Farmacy Program

Reliable access to food helps local families stay healthy. The Genesis Food Farmacy Program, started in 2024, offers a new way for families to receive nutritious, shelf-stable food when it is needed most.

Working alongside the United Way of Coshocton, Muskingum, Perry and Morgan Counties, care teams provide Food Farmacy boxes to neighbors who need healthy food. With six locations across the region, even more community members are receiving help when they need it most.



### Bringing specialty care closer to Coshocton

Quality healthcare should not mean traveling far. Opened in 2025, the Genesis Coshocton Specialty Center makes specialty services easier to reach for Coshocton-area residents.

Experienced teams provide:

- Cancer care
- Crohn’s and Colitis Clinic
- Endocrinology
- Interventional pain management
- Lung care
- Rheumatology

To ask whether you need a physician referral or to schedule an appointment, call 740-722-9524. The center is located at 646 Chestnut St., Coshocton. Visit [genesis-hcs.org/coshocton-specialty-center](https://www.genesis-hcs.org/coshocton-specialty-center).

### Genesis NurseLine

When health questions arise, day or night, you want clear, trustworthy guidance. The Genesis NurseLine provides free, 24/7 access to registered nurses who can answer general questions and help you choose the next steps in care that feel right for you.

The NurseLine can help you:

- Understand what your symptoms may mean
- Get answers to everyday health questions
- Consider whether to seek emergency care or schedule a provider visit
- Make confident decisions, even when transportation or provider access is limited

### 2025 NurseLine impact

**16,496**

Calls served

**\$804,262**

Invested in community support

Reach a Genesis nurse at 740-455-4949.



# BUILDING BETTER HEALTH, TOGETHER

When you take steps to care for your health, our community becomes stronger. From emergency care to specialty treatment, Genesis keeps expert care close to home so you can get help faster and stay near the people who support you.

In 2025:



## 82,763

Times the community turned to Genesis Emergency Departments when it mattered the most



## 279

People enrolled in trauma classes to be prepared to help others



## 1,600

Community members experienced healing because of 66 placenta donors



## \$21,116

Was invested by Genesis to support women's and children's programs across the region



## 1,287

Babies were welcomed, keeping families close to home



## 1,371

Parents, caregivers and siblings built confidence through childbirth, newborn and breastfeeding classes

**Because you chose local care, our community achieved more.**

Your trust in choosing and supporting local healthcare led to meaningful outcomes:



Genesis was reaccruited by the Accreditation Commission for Health Care, ensuring you are receiving expert, high-quality care.



Our patients stayed safe with an "A" Hospital Safety Grade from The Leapfrog Group.



American Heart Association.

Families manage blood pressure and diabetes with Genesis Primary Care, which was recognized by the American Heart Association for excellence in heart health.



Thanks to how patients embraced technology to easily connect to care, Genesis was named a 2025 Most Wired hospital for the 10<sup>th</sup> consecutive year.

## MyChart Stay connected with 57378

We take your privacy seriously at Genesis. If you receive a text message from **57378**, you can be confident that it's from us. This number sends quick, helpful messages to support your care:

- Updates make it easy to stay informed
- Reminders keep you on track
- Full details are available safely in MyChart

You can change your communication preferences in MyChart, or your care team can help you choose the options that work best for you.

Visit [mychart.geneshcs.org](https://mychart.geneshcs.org) to learn more.

# GROWING YOUR LOCAL CARE TEAM

Physicians welcomed to Genesis HealthCare System in 2025



**Arslan Ahmed, M.D.**  
General Cardiology



**Persey O. Bediako, M.D.**  
General Cardiology



**Anna Carpenter, M.D.**  
Interventional Pain Medicine



**Alexandra M. Davies, D.O.**  
Gastroenterology



**Jordan M. Gales, M.D.**  
Clinical Cardiac Electrophysiology



**Adel Hanandeh, M.D.**  
Vascular Surgery



**Anna Hay, M.D.**  
General Cardiology



**Alex K. Kemei, M.D.**  
Internal Medicine



**Thomas Grant Lewis, D.O.**  
General Surgery



**Surender R. Neravetla, M.D.**  
Cardiothoracic Surgery



**Derrick L. Reedus Sr., M.D.**  
Urology



**Nimisha Srivastava, M.D.**  
Hematology/Oncology



**Muhammad Shahan Sulehri, M.D.**  
Endocrinology



**Akanksha Thakkar, M.D.**  
Interventional Cardiology

Access to care continues to expand across our community. Through ongoing efforts to welcome highly-qualified physicians, Genesis is helping ensure care is available closer to home where it's needed most.



# COMMUNITY GENEROSITY IS STRENGTHENING HEALTHCARE

## A message from the Genesis HealthCare Foundation

In 2025, the dedication of our community continued to advance healthcare across the region by supporting the Genesis HealthCare Foundation.

# \$10,000,000+

**Raised for healthcare**

These funds were reinvested into Genesis HealthCare System to support innovative equipment, safety tools, patient assistance programs and services that improve care for patients and team members.

Foundation support also helped families with transportation, essential needs and access to care. Investments continued to strengthen key services, including cancer care, hospice and palliative medicine, heart and vascular care, women's and children's services and surgical care.

Major highlights included progress on the Genesis Hospice Care Capital Campaign and successful events like the annual Genesis Foundation Pro-Am, which supports advanced equipment and program needs.

### Expanding hospice care for our community

The new Genesis Hospice Care facility, opening in 2026, is made possible through support from our community, the Franciscan Sisters of Christian Charity, the J.W. & M.H. Straker Charitable Foundation and Genesis team members.

The new facility will replace the Morrison House, which has cared for families for more than 35 years and must now be replaced. It will feature private rooms, peaceful garden spaces and larger areas where families can gather and spend time together.

These improvements will help ensure compassionate end-of-life care continues for people throughout our region.

### Thank you to our community

Thank you to everyone in our community for your support, kindness and trust. Your generosity helps make our region healthier and stronger.

We're also grateful to the Genesis Board and Foundation Board members for their leadership and guidance. Thank you to the Franciscan Sisters of Christian Charity and Bethesda Care System for their continued support and commitment to our mission of caring for our communities.

**Kelly Ashby**

Executive Director, Genesis HealthCare Foundation

# WELL-BEING FOR THE FUTURE

A healthy community needs a strong local economy. Genesis supports both.

Genesis is one of the largest employers in Southeastern Ohio. Our team members live, work and raise their families here, helping support local businesses, schools and public services across the region.

## \$354.6 MILLION

In payroll

## \$16 MILLION

Supporting public services through  
local and state taxes

## 4,400+

Team members

This investment supports jobs, strengthens public programs and improves the quality of life across our communities.



*Dr. Chad Brown, Zane State College President, with  
Matt Perry, Genesis President & CEO*

### Expanding workforce development through educational partnerships

Genesis partners with Muskingum University and Zane State College to grow the healthcare workforce in our region. These partnerships expand access to healthcare education and create pathways from the classroom to clinical care.

### The next generation of healthcare

The Future Healers program launched in 2025 and introduces high school juniors to healthcare careers through hands-on learning and career exploration. The program is part of our broader effort to build the future healthcare workforce through job shadows, internships and learning opportunities.

### 2025 education impact

## 11,459

People served through education programs

## 460

High school students in the Future Healers program

### 2025 team member impact

## 4,692

Volunteer hours, helping 165 local nonprofit organizations

## \$46,000

Given to United Way of Coshocton, Muskingum, Perry and Morgan Counties by team member and corporate sponsorship

## 315

Units of blood donated during Genesis blood drives, saving nearly 900 lives