

DELIVERED BY:



## BUILDING A HEALTHIER COMMUNITY

### 2025-2027 Implementation Strategy/ Community Health Improvement Plan for Genesis HealthCare System

PUBLISHED MAY 2025



**Genesis**  
HEALTHCARE SYSTEM



**NOBLE COUNTY**  
HEALTH DEPARTMENT



**Public Health**  
Perry County  
Health Department



**Public Health**  
Prevent. Promote. Protect.  
MORGAN COUNTY HEALTH DEPT.



**Public Health**  
Prevent. Promote. Protect.  
Zanesville-Muskingum County



# TABLE OF CONTENTS

<b>A NOTE FROM THE SOUTHEASTERN OHIO HEALTH IMPROVEMENT COLLABORATIVE.....</b>	<b>3</b>
<b>ACKNOWLEDGEMENTS.....</b>	<b>4</b>
<b>INTRODUCTION.....</b>	<b>5</b>
WHAT IS AN IMPLEMENTATION STRATEGY/IMPROVEMENT PLAN (CHIP)?.....	5
OVERVIEW OF PROCESS.....	6
DEFINING THE GENESIS SERVICE AREA.....	7
GENESIS SERVICE AREA AT-A-GLANCE.....	8
KEY DATA ON PRIORITY HEALTH NEEDS FOR THE GENESIS SERVICE AREA.....	9
<b>STEP 1: PLAN &amp; PREPARE FOR THE IMPLEMENTATION STRATEGY/IMPROVEMENT PLAN.....</b>	<b>10</b>
<b>STEP 2: DEVELOP GOALS, OBJECTIVES, &amp; IDENTIFY INDICATORS.....</b>	<b>12</b>
PRIORITY HEALTH NEEDS FOR THE GENESIS SERVICE AREA.....	17
<b>STEPS 3 &amp; 4: CONSIDER &amp; SELECT APPROACHES TO ADDRESS PRIORITY HEALTH NEEDS .....</b>	<b>18</b>
PRIORITY AREA 1: BEHAVIORAL HEALTH.....	19
PRIORITY AREA 2: CHRONIC DISEASES.....	20
PRIORITY AREA 3: ACCESS TO HEALTHCARE.....	21
CURRENT RESOURCES ADDRESSING PRIORITY HEALTH NEEDS.....	22
<b>STEPS 5-8: INTEGRATE, DEVELOP, ADOPT, &amp; SUSTAIN IMPLEMENTATION STRATEGY/IMPROVEMENT PLAN.....</b>	<b>30</b>
<b>NEXT STEPS.....</b>	<b>31</b>
EVALUATION OF IMPACT.....	31
HEALTH NEEDS THAT WILL NOT BE ADDRESSED.....	31
<b>APPENDICES.....</b>	<b>32</b>
APPENDIX A: IRS IMPLEMENTATION STRATEGY CHECKLIST.....	32
APPENDIX B: PHAB CHIP CHECKLIST.....	34
APPENDIX C: REFERENCES.....	36

# A NOTE FROM SOUTHEASTERN OHIO HEALTH IMPROVEMENT COLLABORATIVE



The Southeastern Ohio Health Improvement Collaborative (SOHIC) includes Genesis HealthCare System (GHS), Morgan County Health Department (MCHD), Noble County Health Department (NCHD), Perry County Health Department (PCHD), and Zanesville-Muskingum County Health Department (ZMCHD). SOHIC strives to bring together people and organizations to improve community wellness. The community health needs assessment process is one way we can live out our mission. In order to fulfill this mission, we must be intentional about understanding the health issues that impact residents and work together to create a healthy community.

A primary component of creating a healthy community is assessing the needs and prioritizing those needs for impact. In 2024, SOHIC partnered to conduct a comprehensive Community Health Needs Assessment (CHNA) to identify primary health issues, current health status, and other health needs. These findings were then used to develop an Implementation Strategy/Improvement Plan (CHIP) to describe the response to the needs identified in the CHNA report.

The 2025-2027 SOHIC Implementation Strategy/CHIP would not have been possible without the help of numerous community organizations, acknowledged on the following pages. It is vital that assessments such as this continue, so partners know where to direct resources and how to use them in the most advantageous ways.

The goals of public health can only be accomplished through community members' commitment to themselves and to each other. SOHIC believes that together, the Genesis Service Area can be a thriving community of health and well-being at home, work, school, and play.

Importantly, this report could not exist without the contributions of individuals in the community who participated in interviews and completed the community member survey. SOHIC is grateful for those individuals who are committed to the health of the community, and took the time to share their health concerns, needs, behaviors, praises, and suggestions for future improvement.

Sincerely,

*Linda Supplee*

**Linda Supplee**

Chief Population Health Officer  
Genesis HealthCare System

# ACKNOWLEDGEMENTS



This Implementation Strategy/Improvement Plan (CHIP) was made possible thanks to the collaborative efforts of the Southeastern Ohio Health Improvement Collaborative (SOHIC), community partners, local stakeholders, non-profit partners, and community residents. Their contributions, expertise, time, and resources played a critical part in the completion of this assessment.

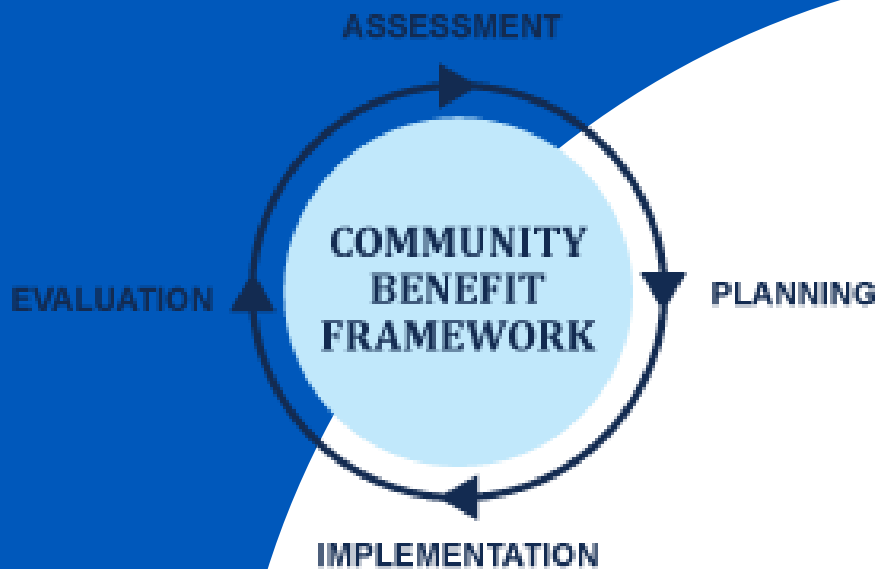
## SOHIC WOULD LIKE TO RECOGNIZE THE FOLLOWING ORGANIZATIONS FOR THEIR CONTRIBUTIONS TO THIS REPORT:

Access Muskingum	New Lexington Police Department
AllWell Behavioral Health Services	Newton Township Fire Department
Area Agency on Aging Region 9	Noble Board of Developmental Disabilities
Big Brothers/Big Sisters	Noble County Cares
Board of Health	Noble County Committee on Aging / Senior Center
Cambridge City Schools	Noble County Health Department
Chamber of Commerce	Noble County Veterans Service Commission
Christ's Table	Noble Local School District
Coshocton Public Health District	Ohio Air Quality Development Authority
Enterprise Muskingum	Ohio Center for Autism and Low Incidence (OCALI)
Family and Children First Council	Ohio Medical Aid Services
Foxfire Community Schools	Ohio State University Extension Office
Full Circle Recovery Services	Perry Behavioral Health Choices
Genesis HealthCare System	Perry County Court
Guernsey, Monroe, Noble Counties (GMN) Tri-County Community Action Commission (CAC), Inc.	Perry County District Library
Hands of Faith	Perry County Health Department
Life Support Therapy Services	Perry County Public Children Services Agency
Malta & McConnellsville Fire Department	Perry County Veterans Service Commission
Mental Health and Recovery Services Board	PrimeCare of Southeastern Ohio/ Muskingum County
Morgan County Board of Developmental Disabilities	Shrivers Pharmacy
Morgan County Commissioners	South East Area Transit (SEAT)
Morgan County Health Department	Southeastern Ohio Regional Medical Center
Morgan County Job and Family Services	The Ohio Bass Federation
Morgan County Library	The Ohio State University
Morgan County Office - Ohio State University (OSU) Extension	Village of New Lexington
Morgan County Office on Aging	YMCA
Muskingum County Center for Seniors	Zanesville Pride Board
Muskingum County Sheriff Office	Zanesville-Muskingum County Health Department
Muskingum Valley Health Center	

The 2025-2027 Implementation Strategy/Improvement Plan (CHIP) report was prepared by Moxley Public Health, LLC, ([www.moxleypublichealth.com](http://www.moxleypublichealth.com)) an independent consulting firm that works with hospitals, health departments, and other community-based nonprofit organizations both domestically and internationally to conduct Community Health Assessments (CHAs)/Community Health Needs Assessments/CHNAs and Improvement Plans (CHIPs)/Implementation Strategies.

## INTRODUCTION

# WHAT IS AN IMPLEMENTATION STRATEGY/ IMPROVEMENT PLAN (CHIP)?



An **Implementation Strategy/Improvement Plan (CHIP)** is part of a framework that is used to guide community benefit activities-policy, advocacy, and program-planning efforts. For hospitals, the Implementation Strategy describes their plan to respond to the needs identified through the previous Community Health Needs Assessment (CHNA) process. It also fulfills a requirement mandated by the Internal Revenue Service (IRS) in Section 1.501(r)(3). For health departments, the Improvement Plan (CHIP) fulfills the mandates of the Public Health Accreditation Board (PHAB).

# OVERVIEW OF THE PROCESS



In order to develop an Implementation Strategy/Improvement Plan (CHIP), the Southeastern Ohio Health Improvement Collaborative (SOHIC) followed a process that included the following steps:

**STEP 1: Plan and prepare for the Implementation Strategy/CHIP.**

**STEP 2: Develop goals/objectives and identify indicators to address health needs.**

**STEP 3: Consider approaches/strategies to address prioritized needs, health disparities, and social determinants of health.**

**STEP 4: Select approaches with community partners.**

**STEP 5: Integrate Implementation Strategy/CHIP with community partner, health department, and hospital plans.**

**STEP 6: Develop a written Implementation Strategy/CHIP.**

**STEP 7: Adopt the Implementation Strategy/CHIP.**

**STEP 8: Update and sustain the Implementation Strategy/CHIP.**

Within each step of this process, the guidelines and requirements of both the state and federal governments are followed precisely and systematically.

**THE 2025-2027 SOUTHEASTERN OHIO HEALTH IMPROVEMENT COLLABORATIVE IMPLEMENTATION STRATEGY/CHIP MEETS ALL IRS AND PHAB REGULATIONS.**

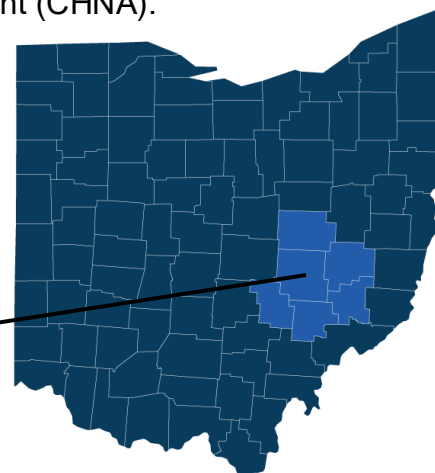
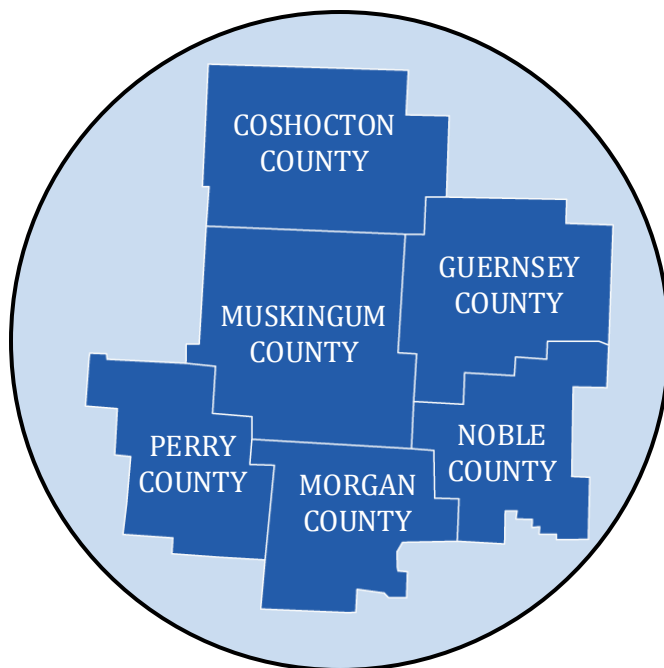




# DEFINING THE GENESIS SERVICE AREA (GSA)



For the purposes of this report, Genesis HealthCare System defines their primary service area as being made up of Coshocton, Guernsey, Morgan, Muskingum, Noble, and Perry Counties, Ohio. While Coshocton and Guernsey Counties are not a formal part of the Southeastern Ohio Health Improvement Collaborative (SOHIC), they are a part of the GSA and were included in the Community Health Needs Assessment (CHNA).



We currently serve a  
population of

**224,771<sup>1</sup>**

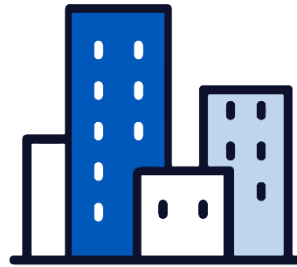
GSA ZIP CODES					
COSHOCTON COUNTY <i>Population:</i> <b>36,869</b>	GUERNSEY COUNTY <i>Population:</i> <b>38,089</b>	MORGAN COUNTY <i>Population:</i> <b>13,646</b>	MUSKINGUM COUNTY <i>Population:</i> <b>86,305</b>	NOBLE COUNTY <i>Population:</i> <b>14,311</b>	PERRY COUNTY <i>Population:</i> <b>35,551</b>
43812	43725	43756	43701	43724	43076
43832	43762	45732	43830	43773	43764
43821	43723	43731	43777	45715	43777
43822	43773	43758	43762	43772	45732
43845	43772	43787	43821	43780	43783
43824	43780	45715	43822	43732	43731
43844	43973	43732	43760	45745	43748
43804	43749	45711	43771	43779	43760
44637	43732	43728	43727	43788	43739
43843	43778		43732	45727	43730
43811	43755		43746	45746	43766
43006	43983		43802	43711	43150
43805	43750		43767	43717	43782
43803	43768		43720		43761
43828	43722		43734		
43836	43733		43791		
	43736		43740		
			43702		
			43735		
			43738		
			43842		

# GENESIS SERVICE AREA (GSA) AT-A-GLANCE

The GSA's population is **224,771**.  
The populations of both the GSA and Ohio  
**remained relatively the same** in the past 3 years<sup>1</sup>

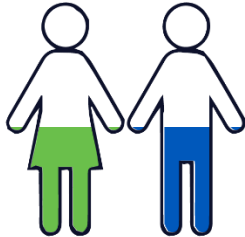
**No  
Change  
GSA**

**-0.1%  
OHIO**



On average, GSA counties are ranked **63<sup>rd</sup> of 88** ranked counties in Ohio, according to social, economic, and health factors (with 1 being the best), placing it in the **bottom third** of the state's counties<sup>2</sup>

The % of males and females is **approximately equal**<sup>3</sup>

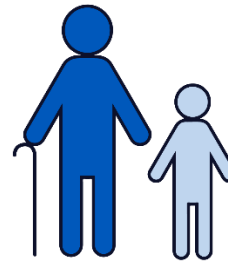


**50% 50%**



**6%**

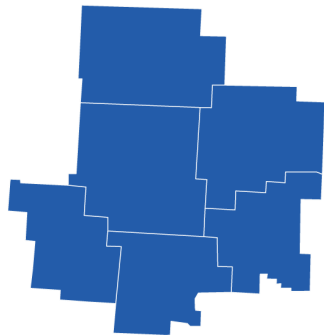
of GSA residents are **veterans**, slightly higher than the state rate<sup>4</sup>



Youth ages 0-19 and seniors 65+ make up

**43% of the population**

In the GSA, nearly **1 in 5 residents are age 65+<sup>3</sup>**



**96% of the population in the GSA speaks only English.**  
**1% are foreign-born**<sup>4,5</sup>

The **majority (94%)** of the population in the GSA identifies as **White** as their only race<sup>3</sup>



<b>94%</b> WHITE RESIDENTS	<b>1%</b> HISPANIC OR LATINO RESIDENTS	<b>3%</b> BLACK/ AFRICAN AMERICAN RESIDENTS	<b>0.3%</b> AMERICAN INDIAN/ ALASKA NATIVE RESIDENTS	<b>0.4%</b> ASIAN RESIDENTS	<b>0.0%</b> NATIVE HAWAIIAN/ PACIFIC ISLANDER RESIDENTS	<b>3%</b> MULTI- RACIAL/ OTHER RESIDENTS
----------------------------------	---	---	---	-----------------------------------	--	--



The life expectancy in the GSA of **74.4 years** is **1.2 years shorter** than it is for the state of Ohio<sup>6</sup>



**1 in 195**

GSA residents will **die prematurely**, which is approximately the same as the Ohio state rate<sup>6</sup>



# PRIORITY HEALTH NEEDS FOR THE GENESIS SERVICE AREA (GSA)



1



## BEHAVIORAL HEALTH

The GSA has **fewer** mental health providers relative to its population compared to Ohio<sup>6</sup>  
27% of survey respondents say that community **mental healthcare access** is lacking

In the community member survey, **80%** of respondents reported **substance use** as a top health concern

2



## CHRONIC DISEASES

**More than half (55%)** of survey respondents reported **chronic diseases** as a top health concern in the community

The most mentioned chronic diseases of concern were **diabetes, cancer, and heart disease**  
**41%** of GSA residents are **obese**, higher than the state rate for Ohio (38%)<sup>6</sup>

3



## ACCESS TO HEALTHCARE

**23%** of community survey respondents reported **primary healthcare access** as a top health concern  
**34%** of respondents **delayed or went without medical care** due to being unable to get an appointment

The GSA has **less access to primary care and dental care providers** than Ohio overall, based on the ratios of population to providers<sup>7</sup>



GSA = Genesis Service Area, which includes Coshocton, Guemsey, Morgan, Muskingum, Noble, and Perry Counties Ohio

# STEP 1 PLAN AND PREPARE FOR THE IMPLEMENTATION STRATEGY/IMPROVEMENT PLAN (CHIP)



## **IN THIS STEP, THE SOUTHEASTERN OHIO HEALTH IMPROVEMENT COLLABORATIVE (SOHIC):**

- DETERMINED WHO WOULD PARTICIPATE IN THE DEVELOPMENT OF THE IMPLEMENTATION STRATEGY/CHIP
- ENGAGED BOARD AND EXECUTIVE LEADERSHIP
- REVIEWED COMMUNITY HEALTH NEEDS ASSESSMENT



**Public Health**  
Prevent. Promote. Protect.  
**Perry County**  
Health Department



**Public Health**  
Prevent. Promote. Protect.  
**MORGAN COUNTY HEALTH DEPT.**



**Public Health**  
Prevent. Promote. Protect.  
**Zanesville-Muskingum County**



## PLAN AND PREPARE FOR THE 2025-2027 SOUTHEASTERN OHIO HEALTH IMPROVEMENT COLLABORATIVE IMPLEMENTATION STRATEGY/ IMPROVEMENT PLAN (CHIP)

Secondary and primary data were collected to complete the 2024 Genesis HealthCare System Community Health Needs Assessment (CHNA). (Available at

<https://www.genesishcs.org/our-impact/about-us/community>).

Secondary data were collected from a variety of local, county, and state sources to present community demographics, social determinants of health, healthcare access, birth characteristics, leading causes of death, chronic disease, health behaviors, mental health, substance use, and preventive practices. The analysis of secondary data yielded a preliminary list of significant health needs, which then informed primary data collection.

Primary data was collected through key informant interviews with **48** experts from various organizations serving the Genesis Service Area (GSA) and included leaders and representatives of medically underserved, low-income, and minority populations, or local health or other departments or agencies. A *community member survey* was distributed via a QR code and link with **1,218** responses. The survey responses (from community members) were used to prioritize the health needs, answer in-depth questions about the health needs in the county, and to identify health disparities present in the community. Finally, there were **15** focus groups held across the GSA, representing a total of **143** community members from priority populations. The primary data collection process was designed to validate secondary data findings, identify additional community issues, solicit information on disparities among subpopulations, ascertain community assets potentially available to address needs, and prioritize health needs. More detail on methodology can be found in the 2024 Genesis HealthCare System CHNA Report.

“

The improvement plan (CHIP) deals with the “how and when” of addressing needs. While the community health needs assessment considers the “who, what, where and why” of community health needs, the CHIP takes care of the how and when components.

- Catholic Health Association

”



## STEP 2

# DEVELOP GOALS AND OBJECTIVES AND IDENTIFY INDICATORS FOR ADDRESSING COMMUNITY HEALTH NEEDS



### **IN THIS STEP, THE SOUTHEASTERN OHIO HEALTH IMPROVEMENT COLLABORATIVE (SOHIC):**

- DEVELOPED GOALS FOR THE IMPLEMENTATION STRATEGY/IMPROVEMENT PLAN (CHIP) BASED ON THE FINDINGS FROM THE CHNA
- SELECTED INDICATORS TO ACHIEVE GOALS



**Public Health**  
Prevent. Promote. Protect.  
**Perry County**  
Health Department



**Public Health**  
Prevent. Promote. Protect.  
**MORGAN COUNTY HEALTH DEPT.**



**Public Health**  
Prevent. Promote. Protect.  
**Zanesville-Muskingum County**

# OVERVIEW

## OF THE PROCESS (CONTINUED)



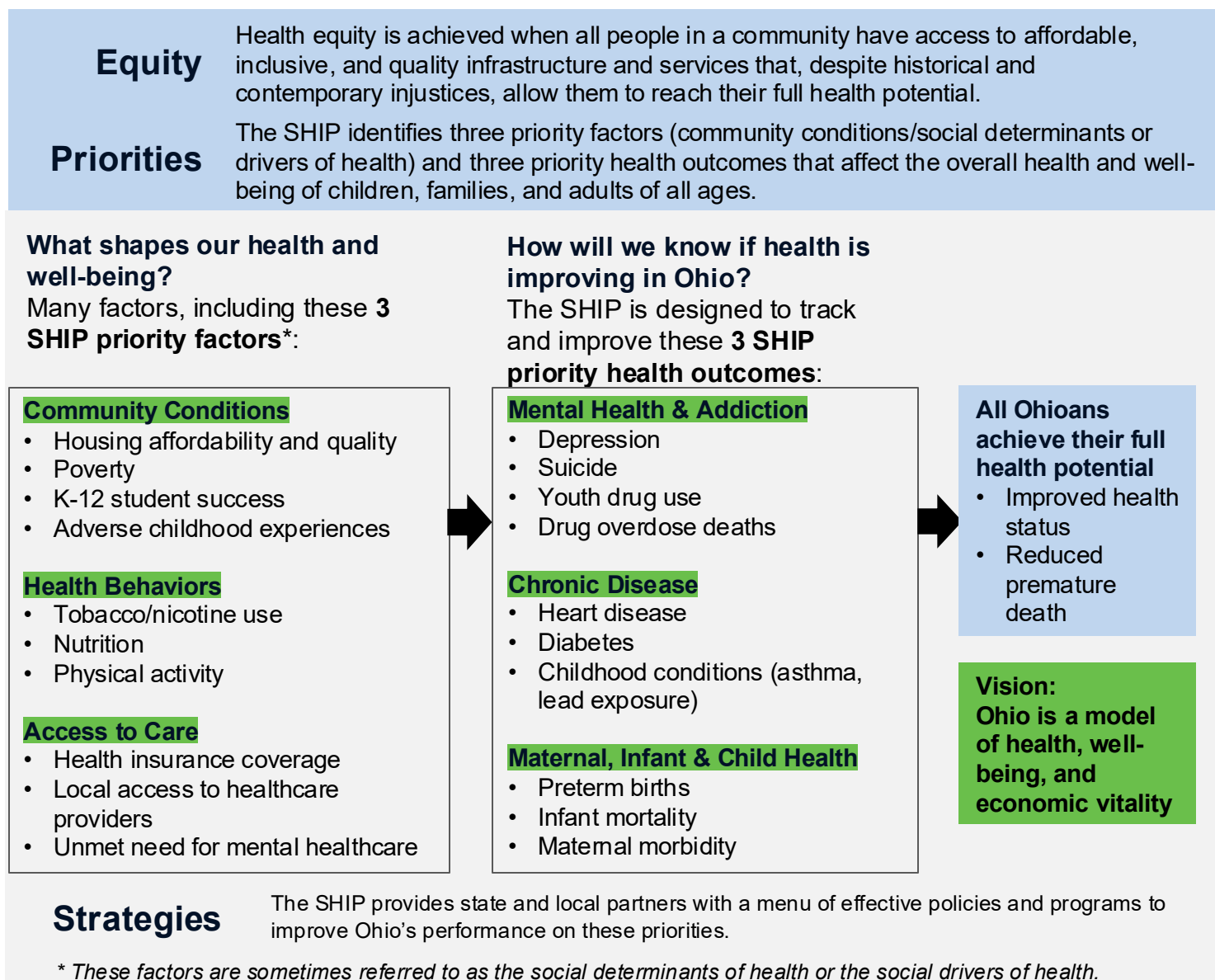
### Ohio Department of Health (ODH) Requirements

The following image shows the framework from ODH that this report followed while also adhering to federal requirements and the community's needs.

The Southeastern Ohio Health Improvement Collaborative (SOHIC) desired to align with the priorities and indicators of the Ohio Department of Health (ODH). To do this, they used the following guidelines when prioritizing the health needs of their community.

First, SOHIC used the same language as the state of Ohio when assessing the factors and health outcomes of their community in the 2024 Genesis HealthCare System Community Health Needs Assessment (CHNA).

**Figure 1: Ohio State Health Improvement Plan (SHIP) Framework**



Next, with the data findings from the community health needs assessment process, the Southeastern Ohio Health Improvement Collaborative (SOHIC) used the following guidelines/worksheet to choose priority health factors and priority health outcomes (worksheet/guidelines continued to next page).

## ALIGNMENT WITH PRIORITIES AND INDICATORS

**STEP 1:** Identify at least one priority factor and at least one priority health outcome.

PRIORITY FACTORS	PRIORITY HEALTH OUTCOMES
<input checked="" type="checkbox"/> Community Conditions	<input checked="" type="checkbox"/> Mental Health and Addiction
<input checked="" type="checkbox"/> Health Behaviors	<input checked="" type="checkbox"/> Chronic Disease
<input checked="" type="checkbox"/> Access to Care	<input checked="" type="checkbox"/> Maternal and Infant Health

**STEP 2:** Select at least 1 indicator for each identified priority factor.

PRIORITY FACTORS	
COMMUNITY CONDITIONS	
TOPIC	INDICATOR NAME
Housing Affordability and Quality	<input checked="" type="checkbox"/> Affordable and Available Housing Units
Poverty	<input checked="" type="checkbox"/> Child Poverty
	<input checked="" type="checkbox"/> Adult Poverty
K-12 Student Success	<input checked="" type="checkbox"/> Chronic Absenteeism (K-12 students)
	<input checked="" type="checkbox"/> Kindergarten Readiness
Adverse Childhood Experiences	<input checked="" type="checkbox"/> Adverse Childhood Experiences (ACEs)
	<input checked="" type="checkbox"/> Child Abuse and Neglect
Food Insecurity	<input checked="" type="checkbox"/> Food Insecurity
Environmental Conditions	<input checked="" type="checkbox"/> Air Quality
	<input checked="" type="checkbox"/> Water Quality
HEALTH BEHAVIORS	
TOPIC	INDICATOR NAME
Tobacco/Nicotine Use	<input type="checkbox"/> Adult Smoking
	<input checked="" type="checkbox"/> Youth All-Tobacco/Nicotine Use
Nutrition	<input checked="" type="checkbox"/> Fruit Consumption
	<input checked="" type="checkbox"/> Vegetable Consumption
Physical Activity	<input checked="" type="checkbox"/> Child Physical Activity
	<input checked="" type="checkbox"/> Adult Physical Activity
ACCESS TO CARE	
TOPIC	INDICATOR NAME
Health Insurance Coverage	<input checked="" type="checkbox"/> Uninsured Adults
	<input checked="" type="checkbox"/> Uninsured Children
Local Access to Healthcare Services	<input checked="" type="checkbox"/> Primary Care Health Professional Shortage Areas
	<input checked="" type="checkbox"/> Mental Health Professional Shortage Areas
Unmet Need for Mental Healthcare	<input checked="" type="checkbox"/> Youth Depression Treatment Unmet Need
	<input checked="" type="checkbox"/> Adult Mental Healthcare Unmet Need



## ALIGNMENT WITH PRIORITIES AND INDICATORS (CONTINUED)

**STEP 2 (continued):** Select at least 1 indicator for each identified priority health outcome.

PRIORITY HEALTH OUTCOMES	
MENTAL HEALTH AND ADDICTION	
TOPIC	INDICATOR NAME
Depression	<input checked="" type="checkbox"/> Youth Depression
	<input checked="" type="checkbox"/> Adult Depression
Suicide Deaths	<input checked="" type="checkbox"/> Youth Suicide Deaths
	<input checked="" type="checkbox"/> Adult Suicide Deaths
Youth Drug Use	<input checked="" type="checkbox"/> Youth Alcohol Use
	<input checked="" type="checkbox"/> Youth Marijuana Use
Drug Overdose Deaths	<input checked="" type="checkbox"/> Unintentional Drug Overdose Deaths
CHRONIC DISEASE	
TOPIC	INDICATOR NAME
Heart Disease	<input checked="" type="checkbox"/> Coronary Heart Disease
	<input checked="" type="checkbox"/> Premature Death – Heart Disease
	<input checked="" type="checkbox"/> Hypertension
Diabetes	<input checked="" type="checkbox"/> Diabetes
Harmful Childhood Conditions	<input checked="" type="checkbox"/> Child Asthma Morbidity
	<input checked="" type="checkbox"/> Child Lead Poisoning
MATERNAL AND INFANT HEALTH	
TOPIC	INDICATOR NAME
Preterm Births	<input checked="" type="checkbox"/> Preterm Births
Infant Mortality	<input checked="" type="checkbox"/> Infant Mortality
Maternal Morbidity/Mortality	<input checked="" type="checkbox"/> Severe Maternal Morbidity/Mortality

# ADDRESSING THE HEALTH NEEDS



The 2024 Community Health Needs Assessment (CHNA) identified the following significant health needs from an extensive review of the primary (community survey, interviews, and focus groups) and secondary data (existing data). The significant health needs were ranked as follows through the community member survey (1,218 responses from community members).

<b>COMMUNITY CONDITIONS RANKING FROM COMMUNITY MEMBER SURVEY</b>
<b>#1 Income/poverty and employment</b>
<b>#2 Access to mental healthcare</b>
<b>#3 Access to childcare</b>
<b>#4 Access to primary healthcare</b>
<b>#5 Adverse childhood experiences</b>
<b>#6 Food insecurity</b>
<b>#7 Housing and homelessness</b>
<b>#8 Internet/Wi-Fi access</b>
<b>#9 Access to specialist healthcare</b>
<b>#10 Health insurance coverage</b>
<b>#11 Crime and violence</b>
<b>#12 Transportation</b>
<b>#13 Education</b>
<b>#14 Access to dental/oral healthcare</b>
<b>#15 Physical health/exercise</b>
<b>#16 Preventive care and practices</b>
<b>#17 Nutrition</b>
<b>#18 Health literacy</b>
<b>#19 Access to public/safe water and other utilities</b>
<b>#20 Access to social engagement and volunteer opportunities</b>
<b>#21 Environmental conditions</b>
<b>#22 Access to vision healthcare</b>

<b>HEALTH OUTCOMES RANKING FROM COMMUNITY MEMBER SURVEY</b>
<b>#1 Substance use disorder</b>
<b>#2 Mental health</b>
<b>#3 Chronic diseases</b>
<b>#4 Tobacco and nicotine use/smoking/vaping</b>
<b>#5 Suicide</b>
<b>#6 Maternal, infant, and child health</b>
<b>#7 Injuries</b>
<b>#8 HIV/AIDS and Sexually Transmitted Infections (STIs)</b>

# ADDRESSING THE HEALTH NEEDS



From the significant health needs, the Southeastern Ohio Health Improvement Collaborative (SOHIC) chose health needs that considered the health department and community partners' capacity to address community needs, the strength of community partnerships, and those needs that correspond with the health department and community partners' priorities.

## THE 3 PRIORITY HEALTH NEEDS THAT WILL BE ADDRESSED IN THE 2025-2027 IMPLEMENTATION STRATEGY/IMPROVEMENT PLAN (CHIP) ARE:

**Priority Area 1: Behavioral Health**

**Priority Area 2: Chronic Diseases**

**Priority Area 3: Access to Healthcare**





## STEPS 3 & 4

# CONSIDER AND SELECT APPROACHES/STRATEGIES TO ADDRESS PRIORITIZED NEEDS, HEALTH DISPARITIES, AND SOCIAL DETERMINANTS OF HEALTH WITH COMMUNITY PARTNERS



### **IN THESE STEPS, THE SOUTHEASTERN OHIO HEALTH IMPROVEMENT COLLABORATIVE (SOHIC):**

- SELECTED APPROACHES/  
STRATEGIES TO ADDRESS THE  
GENESIS SERVICE AREA  
PRIORITIZED HEALTH NEEDS,  
HEALTH DISPARITIES, AND SOCIAL  
DETERMINANTS OF HEALTH
- DEVELOPED A WRITTEN  
IMPLEMENTATION  
STRATEGY/IMPROVEMENT PLAN  
(CHIP) REPORT



**Public Health**  
Prevent. Promote. Protect.  
**Perry County**  
Health Department



**Public Health**  
Prevent. Promote. Protect.  
**MORGAN COUNTY HEALTH DEPT.**



**Public Health**  
Prevent. Promote. Protect.  
**Zanesville-Muskingum County**

# #1

## PRIORITY AREA BEHAVIORAL HEALTH

*(includes both mental health and substance abuse as well as Adverse Childhood Experiences (ACEs), access to care, community education, youth tobacco and nicotine use)*



### STRATEGIES

Implement a single phone line for the community to link the public to the soonest Behavioral Health (BH) outpatient appointment between Genesis and All Well.

Open the Youth Crisis Stabilization Unit (YCSU) and provide short-term residential treatment for youth in crisis.

Genesis HealthCare System will establish partnerships with community organizations and joint behavioral health programs, aiming to increase access to mental health services for more residents.

### PARTNERS

Genesis HealthCare System, All-Well, Muskingum County Mental Health and Recovery Board

Genesis HealthCare System, All-Well, Muskingum County Mental Health and Recovery Board

Muskingum County Mental Health and Recovery Board, Muskingum Valley Health Centers (MVHC), All-Well, Mid- Ohio Behavioral Health, Coshocton County Health Department, Perry County Health Department, Women, Infants & Children (WIC), Help Me Grow

### PRIORITY POPULATIONS

Youth, adults, Muskingum County, local outpatient providers, behavioral health

Youth, GSA, police departments, behavioral health

Adolescents and young adults, elderly population, those with substance use disorders, uninsured/underinsured population, pre/post-natal women, GSA

### DESIRED OUTCOMES OF STRATEGIES



Education and awareness on mental health



Mental health stigma



Access to mental health and substance abuse care and support



Adverse childhood experiences (ACEs)

### OVERALL IMPACT OF STRATEGIES



Mental health



Quality of life



Substance abuse



Mental health and substance abuse ER visits and hospitalizations



Overdose deaths



Suicides



Mental distress and depression

**ALL GENESIS SERVICE AREA RESIDENTS ACHIEVE THEIR FULL HEALTH POTENTIAL**

# #2 PRIORITY AREA CHRONIC DISEASES

(includes education, prevention, access to care, and risk factors)



## STRATEGIES

Improve education on chronic conditions, including management and prevention.

Expand primary care access in the Genesis Service Area (GSA).

Expand mammogram services to Perry County Medical Center to improve access to breast cancer screening for the local community.

Enhance the cardiovascular health of heart disease patients in our region by improving existing cardiac rehabilitation program over the next three years.

## PARTNERS

Genesis HealthCare System, Community Health Partners, Perry County Health Department, Muskingum County Health Department, Noble County Health Department, Morgan County Health Department

Genesis HealthCare System

Perry County Health Department, Genesis HealthCare System

Genesis HealthCare System, local healthcare providers, Silver Sneakers, Genesis Risk Intervention Program (GRIP)

## PRIORITY POPULATIONS

Those with diabetes, heart disease, stroke, cancer, or COPD, low-income population, those who smoke, youth, elderly

GSA residents

Women in Perry County and surrounding areas

Patients recovering from cardiac procedures, those with chronic heart disease

## DESIRED OUTCOMES OF STRATEGIES

Education on chronic diseases & risk factors ↑

Chronic disease prevention, screening & management ↑

Sedentary youth & adults ↓

Nutrition and physical activity opportunities ↑

Access to primary care and routine checkups ↑

Hospitalizations ↓

## OVERALL IMPACT OF STRATEGIES

Access to primary and specialty care ↑

Mental and physical health ↑

Quality of life ↑

Health status ↑

Overweight & obesity ↓

Chronic disease ↓

Premature mortality ↓

**ALL GENESIS SERVICE AREA RESIDENTS ACHIEVE THEIR FULL HEALTH POTENTIAL**



# #3

## PRIORITY AREA ACCESS TO HEALTHCARE

(e.g. doctors, hospitals, specialists, medical appointments, oral/dental healthcare, vision care, mental healthcare, maternal/infant healthcare etc.; includes the following social determinants of health: poverty, income, employment, housing, transportation, food insecurity)



### STRATEGIES

Improve access to acute care services for outlying facilities.

Expand access to behavioral health services by integrating TeleHealth into primary care settings.

Develop/implement programs that provide clinical rotations, job shadows, and internship opportunities for college/HS students, and career exploration for K-12 students (to address income, poverty, and employment).

Partner with local services to provide emergency food boxes to individuals and families experiencing food insecurity.

Genesis Healthcare System will evaluate and enhance current pregnancy and parenting education and support programs.

### PARTNERS

Genesis HealthCare System, Genesis Service Area (GSA) Health Departments, Community Health Partners

Genesis HealthCare System, Genesis Primary Care Providers, Genesis Behavioral Health Service Line

Regional colleges, universities, technical schools, regional high schools, regional career centers, Muskingum Valley Educational Service Center

Local food bank partners

Genesis Marketing and PR team, local health departments

### PRIORITY POPULATIONS

Those suffering from chronic disease in the GSA

Those suffering from behavioral health concerns in the GSA

K-12 students, local school students with reduced resources to career opportunities, adult learners

Food insecure and low-income individuals/families/ households, vulnerable groups (children, seniors, people with disabilities), residents of food deserts, those facing temporary hardships

Expectant parents, new parents, family members, breastfeeding mothers, those seeking parenting education

### DESIRED OUTCOMES OF STRATEGIES

↑ Increase access and utilization of non-emergency healthcare services and existing healthcare resources

↑ Access to maternal, infant, and child healthcare

↓ Delayed care

↓ Food insecurity

### OVERALL IMPACT OF STRATEGIES

↑ Health status

↑ Quality of life

↑ Access to healthcare

↑ Career advancement

↓ Adverse childhood experiences (ACEs)

↓ Unmet care needs

↓ Premature mortality and morbidity

**ALL GENESIS SERVICE AREA RESIDENTS ACHIEVE THEIR FULL HEALTH POTENTIAL**

GSA = Genesis Service Area, which includes Coshocton, Guemsey, Morgan, Muskingum, Noble, and Perry Counties Ohio

# CURRENT RESOURCES

## ADDRESSING PRIORITY HEALTH NEEDS

### OVERALL GENESIS SERVICE AREA (GSA)



Information was gathered on assets and resources that currently exist in the community. This was done using feedback from the community and an overall assessment of the service area. While this list strives to be comprehensive, it may not be complete.

#### Access to Healthcare

CareSource  
Genesis HealthCare System  
Molina Healthcare of Ohio Medicaid  
Ohio Benefits  
Ohio's Best Rx  
Ohio Early Intervention  
Ohio Senior Health Insurance  
Information Program (OSHIP)  
SingleCare  
Women, Infants & Children (WIC)

#### Community & Social Services

Area Agency on Aging Region 9  
Big Brothers Big Sisters of Southeastern Ohio  
Board of Health  
Bridges to Success  
Brightspeed  
Chamber of Commerce  
Cribs for Kids/Safe Sleep Program  
Family and Children First Council  
Foundation for Appalachian Ohio  
Help Me Grow  
Home Energy Assistance Program (HEAP)  
Job & Family Services  
Kaleidoscope  
Kiwanis Club  
Lead Hazard Control Grant  
Legal Aid of Southeast and Central Ohio (LASCO)  
National Youth Advocate Program (NYAP)  
Ohio Center for Autism and Low Incidence (OCALI)

#### Community & Social Services (cont.)

Ohio Medical Aid Services  
Ohio State University Extension Office  
Ohio Third Frontier Technology Validation and Start-up Fund  
Ohio TT (Transparent Telecom)  
Opportunities for Ohioans with Disabilities (OOD)  
PASSPORT (Medicaid program)  
Safe at Home  
Southern Ohio Chamber Alliance  
Spectrum  
The Ohio Bass Federation  
United Way

#### Education

21st Century Community Learning Centers (CCLC)  
Boys & Girls Clubs of America  
Ohio Department of Education  
Ohio Future Farmers of America (FFA) Association  
The Ohio State University

#### Employment

Job & Family Services  
Ohio Means Jobs

#### Environmental

Ohio Air Quality Development Authority

#### Food Insecurity

Farmers' markets  
Food pantries  
SNAP (Supplemental Nutrition Assistance Program)/food stamps

#### Housing & Homelessness

Coalition on Homelessness and Housing in Ohio  
Habitat for Humanity of Southeast Ohio  
Salvation Army  
St. Vincent de Paul  
The U.S Department of Housing and Urban Development (HUD)  
United Way

#### Mental Health & Addiction

Alcoholics Anonymous  
AllWell Behavioral Health Services  
Charlie Health  
Drug Free Clubs of America  
Full Circle Recovery Services  
Mental Health and Recovery Services Board

#### Nutrition & Physical Health

NIH (National Institutes of Health) - Falls and Falls Prevention  
The Nutrition Group  
YMCA - Silver Sneakers

#### Transportation

National Highway Traffic Safety Administration (NHTSA)  
National Traffic Safety Institute (NTSI)

# CURRENT RESOURCES

## ADDRESSING PRIORITY HEALTH NEEDS

### COSHOCTON COUNTY



Information was gathered on assets and resources that currently exist in the community. This was done using feedback from the community and an overall assessment of the service area. While this list strives to be comprehensive, it may not be complete.

#### Access to Healthcare

Coshocotn Regional Medical Center  
Muskingum Valley Health Centers  
MVHC (Muskingum Valley Health Centers) Mobile Unit  
Pregnancy Center of Coshocotn

#### Community & Social Services

Bridges to Wellness  
Coshocotn Beacon Today  
Coshocotn Commissioners Office  
Coshocotn County Board of Developmental Disabilities (CBDD)  
Coshocotn County Chamber of Commerce  
Coshocotn County Courthouse  
Coshocotn County Fatherhood Initiative  
Coshocotn County Handicapped Society  
Coshocotn County Juvenile Court  
Coshocotn County Library System  
Coshocotn County Reentry Coalition  
Coshocotn County Sheriff's Office  
Coshocotn County Veterans Services  
Coshocotn Public Health District  
Coshocotn Senior Center  
Coshocotn Tribune  
First Step Family Violence Intervention Services, Inc.  
Health, Safety & Wellness Expo  
Kno-Ho-Co-Ashland Community Action Commission (Knox, Holmes, Coshocotn & Ashland Counties)  
Lunch Buddies  
Starlink

#### Education

Central Ohio Technical College (COTC) Coshocotn Campus  
Coshocotn City School District  
Coshocotn County Head Start, Inc.  
Hopewell School

#### Education (cont.)

Kids Campus  
Learning Garden of Coshocotn, LTD  
Montessori Preschool Inc.  
Precious Treasures Preschool & Learning Center, LLC.  
Ridgewood Local School District  
River View Local School District  
Sandbox Childcare Center LLC

#### Employment

Coshocotn County Career Center  
Mancan Temporary Staffing Employment Agency

#### Food Insecurity

Conesville United Methodist Church - food distribution  
Congregate meal program - Coshocotn Senior Center  
Coshocotn Farmer's Market  
Free Pentecostal Holiness Church - food pantry  
Home Delivered Meal program - Coshocotn Senior Center  
Mid-Ohio Foodbank  
Mobile Market  
Mom's Meals  
New Life Ministries - food pantry  
Simply EZ Meals  
Upper Room Food Pantry  
West Lafayette Rotary and West Lafayette Police Department - food cupboard

#### Housing & Homelessness

Coshocotn Metropolitan Housing Authority (CMHA)  
First Step Family Violence Intervention Services, Inc. - shelter  
Kno-Ho-Co Ashland Emergency Shelter Program  
Second Chance Emergency Shelter

#### Mental Health & Addiction

Coshocotn Behavioral Health Choices  
Coshocotn Recovery LLC  
Friends of the Coshocotn County Drug Court, Inc.  
Mid-Ohio Behavioral Health  
Riverside Recovery Services, LLC  
Spero Health  
Suicide Prevention Coalition of Coshocotn County

#### Nutrition & Physical Health

Aldi  
American Health Centers  
Anytime Fitness  
Blackstone's Gym  
Buehler's Fresh Foods Coshocotn  
Collins Meat & Food Market  
Colonial Sports n Courts  
Coshocotn City & County Park District  
Coshocotn City Recreation Department  
Friendly Meadows Country Store  
Icon Fitness  
Kids America Inc.  
Lori's Hilltop Market  
Marilyn's Natural Foods  
McKenna's Farm Market  
Olde Thyme Country Market  
Otsego Carry Out & Deli  
Walmart Supercenter

#### Transportation

Canal Cab Company  
Coshocotn County Coordinated Transportation Agency (CCCTA)  
Coshocotn Public Transit



# CURRENT RESOURCES

## ADDRESSING PRIORITY HEALTH NEEDS

### GUERNSEY COUNTY



Information was gathered on assets and resources that currently exist in the community. This was done using feedback from the community and an overall assessment of the service area. While this list strives to be comprehensive, it may not be complete.

#### Access to Healthcare

Medical Associates of Cambridge, Inc.  
Muskingum Valley Health Centers  
MVHC (Muskingum Valley Health Centers) Mobile Unit  
Ohio Health Southeastern Medical Center and Emergency Department  
Open Arms Pregnancy Center

#### Community & Social Services

Bridges to Wellness  
Cambridge Area Chamber of Commerce  
Cambridge-Guernsey County Health Department  
Guernsey Children's Services Board  
Guernsey County Commissioners  
Guernsey County Community Development Corporation  
Guernsey County Courthouse  
Guernsey County District Public Library  
Guernsey County Juvenile Court  
Guernsey County Senior Citizens Center, Inc.  
Guernsey County Sheriff's Office  
Guernsey County Veterans Services  
Guernsey, Monroe, Noble Counties (GMN) Tri-County Community Action Commission (CAC), Inc.  
Harvest House  
Haven of Hope  
Lunch Buddies  
The Daily Jeffersonian

#### Education

All For Kids Inc  
Beatty Avenue Head Start  
Beech Grove Head Start / Early Head Start  
Cambridge City Schools  
Community Nursery School

#### Education (cont.)

East Guernsey Local School District  
Faith Community Childcare  
GMN (Guernsey, Monroe, Noble) Epic Head Start  
Lore City Head Start  
Nurture Preschool & Childcare  
Rolling Hills Early Learning Center  
Thrive Preschool & Childcare  
Wee Cherish Preschool and Childcare

#### Employment

Action Total Staffing  
Competitive Staffing Solutions  
IC Staffing Solutions  
Mancan Temporary Staffing Employment Agency  
Mid-East Career and Technology Centers  
MOVE Staffing - Cambridge  
Southeastern Ohio Staffing & Human Capital Firm LLC  
SURGE Staffing  
We Staff Better LLC

#### Food Insecurity

Feed My People  
First Church of the Nazarene  
Grace Pantry  
Guernsey County Senior Citizens Center - hot meals  
Guernsey Living Water Food Pantry  
Harvest House  
Main Avenue UMC (United Methodist Church) Food Pantry  
Meals on Wheels  
Mid-Ohio Foodbank  
Stop 9 Church of Christ - food pantry

#### Housing & Homelessness

Cambridge Metropolitan Housing Authority  
Samaritan Center for Transitional Housing

#### Housing & Homelessness (cont.)

Society of St. Vincent de Paul  
The Freedom House

#### Mental Health & Addiction

Cambridge Behavioral Hospital  
Cedar Ridge Behavioral Health Solutions  
Community Healthcare Associates  
Guernsey & Noble County Suicide Prevention Coalition  
Guernsey Health Choices, Inc.  
Integrated Services for Behavioral Health - Cambridge  
Mid-Ohio Behavioral Health  
MVHC (Muskingum Valley Health Centers) Addiction Services - Cambridge  
Operation BRIDGE (Bridging Recovery Interdiction Data Gathering Enforcement)  
People to People Counseling  
Southeastern Counseling Center  
Spero Health

#### Nutrition & Physical Health

Aldi  
Anytime Fitness  
Cambridge Area YMCA  
Cambridge Fitness  
Carriage Market Inc  
Cash Saver  
City of Cambridge Parks Department  
CrossFit Indelible  
CrossFit Onerous

#### Transportation

Oneway Cab & Taxi Services LLC  
South East Area Transit (SEAT)

# CURRENT RESOURCES

## ADDRESSING PRIORITY HEALTH NEEDS

### MORGAN COUNTY



Information was gathered on assets and resources that currently exist in the community. This was done using feedback from the community and an overall assessment of the service area. While this list strives to be comprehensive, it may not be complete.

#### Access to Healthcare

Eye Care Associates  
Muskingum Valley Health Centers  
Muskingum Valley Health Centers Dental Clinic  
MVHC (Muskingum Valley Health Centers) Mobile Unit  
Shrivers Pharmacy

#### Community & Social Services

Buckeye Hills Regional Council  
Lunch Buddies  
Malta & McConnellsville Fire Department  
Morgan County Board of Developmental Disabilities  
Morgan County Chamber of Commerce  
Morgan County Children's Services  
Morgan County Commissioners  
Morgan County Courthouse  
Morgan County Health Department  
Morgan County Herald  
Morgan County Juvenile Court  
Morgan County Library  
Morgan County Office on Aging  
Morgan County Private Water Health Fair  
Morgan County Senior Center  
Morgan County Sheriff's Office  
Morgan County United Ministries  
Morgan County Veterans Services  
Morgan County Wellness Coalition  
Survivor Advocacy Outreach Program (SAOP)  
The Community Action Program Corporation of Washington-Morgan Counties  
Thrive Drive  
Transitions Inc.

#### Education

Little Steps Early Learning Center  
Morgan Local School District  
Play and Learn Center

#### Employment

Work Force Development Center

#### Food Insecurity

Commodity Supplemental Food Program (CSFP)  
Global Meals  
Homestyle Direct  
Lutheran Social Service of Central Ohio - mobile food pantry  
Malta United Methodist Church - mobile food pantry  
Meals on Wheels  
Mom's Meals  
Morgan County Community Gardens  
Morgan County Senior Center - congregate meals  
Morgan County United Ministries - food pantry  
Nutrition for Longevity, Inc.  
Senior Farmer's Market Nutrition Program - Buckeye Hills Regional Council  
Southeast Ohio Regional Food Bank and Kitchen

#### Housing & Homelessness

Mary's House  
Morgan County Fair Housing  
Morgan Metropolitan Housing Authority

#### Mental Health & Addiction

Cedar Ridge Behavioral Health Solutions  
Integrated Services for Behavioral Health - McConnellsville  
Morgan Behavioral Health Choices  
Morgan County Suicide Prevention Coalition  
New Hope Creation Center

#### Nutrition & Physical Health

Kroger  
Little Dog Deli  
Meyers Specialty Market  
Parks and Recreation - Morgan County  
Save A Lot  
The Barracks Fitness Center  
Village Fitness

#### Transportation

Morgan County Public Transit  
Region 8 Mobility Solution Center

# CURRENT RESOURCES

## ADDRESSING PRIORITY HEALTH NEEDS

### MUSKINGUM COUNTY



Information was gathered on assets and resources that currently exist in the community. This was done using feedback from the community and an overall assessment of the service area. While this list strives to be comprehensive, it may not be complete.

#### Access to Healthcare

Family Health Services of East Central  
Ohio Zanesville Clinic  
Heartbeats - Family Center  
Muskingum Valley Health Centers  
MVHC (Muskingum Valley Health Centers) Mobile Unit  
PrimeCare of Southeastern Ohio/  
Muskingum County  
Rambo Memorial Health Center  
Shrivers Pharmacy  
Zanesville Close To Home Center

#### Community & Social Services

AT&T  
Bethel Community Center  
Brave Beginnings, Muskingum County  
Children's Advocacy Center  
Bridges to Wellness  
Catholic Social Services  
Community Connection Day  
Dresden Buzz  
Eastside Community Ministry  
ForeverDads Center for Fathers &  
Families  
Hands of Faith  
Juvenile Diversion Program  
Lunch Buddies  
Muskingum County Adult & Child  
Protective Services  
Muskingum County Board of  
Developmental Disabilities (MCBDD)  
Muskingum County Center for Seniors  
Muskingum County Chamber of  
Commerce  
Muskingum County Commissioners  
Muskingum County Courthouse

#### Community & Social Services (cont.)

Muskingum County Juvenile Court  
Muskingum County Library System  
Muskingum County Sheriff's Office  
Muskingum County Veterans Service Office  
Muskingum Economic Opportunity Action  
Group, Inc. (MEOAG)  
Muskingum University Health and Wellness  
Fair  
Newton Township Fire Department  
Project Blueprint 740  
Transitions Inc.  
Zanesville Civic League Community Center  
Zanesville Pride Board  
Zanesville Times Recorder  
Zanesville-Muskingum County Chamber of  
Commerce  
Zanesville-Muskingum County Health  
Department  
Zanesville-Muskingum County Safety  
Council

#### Education

Access Muskingum  
Bishop Fenwick Preschool  
Blue Avenue Head Start  
Careytown Preschool and Child Care Center  
Child Care Resources Inc./Muskingum  
County Head Start  
Coburn Child Care Center  
Durban Drive Head Start Center  
East Forty Christian Preschool  
East Muskingum Local School District  
Enterprise Muskingum  
Foxfire Community Schools  
Franklin Local School District  
Friendship Preschool & Daycare  
Genesis Children's Center

#### Education (cont.)

Honey Bear Daycare  
Larzelere Head Start Center  
Little Arrows Early Learning Center  
Maysville Local School District  
Meadow View Christian Preschool  
Muskingum University  
Muskingum University Center for Child  
Development  
Muskingum Valley Educational Service  
System  
North Terrace Christian Preschool  
Ohio University - Zanesville  
Starlight School  
Sundale Kids  
The Carr Center  
The Learning Academy of SEO  
(Southeastern Ohio)  
The Learning Nest Preschool  
The Little Barnyard Child Care Center  
The Zoo Child Care and Preschool  
Tri-Valley Local School District  
Viola & Virsie's Learning Center  
West Muskingum Local School District  
Zane State College  
Zanesville City Schools

#### Employment

Action Total Staffing  
Competitive Staffing Solutions  
Job Talent Connect  
Mancan Temporary Staffing Employment  
Agency  
Mid-East Career and Technology Centers  
Move Staffing Zanesville  
Ohio Means Jobs - Muskingum County  
SURGE Staffing  
We Staff Better, LLC



# CURRENT RESOURCES

## ADDRESSING PRIORITY HEALTH NEEDS

### MUSKINGUM COUNTY (CONT.)



Information was gathered on assets and resources that currently exist in the community. This was done using feedback from the community and an overall assessment of the service area. While this list strives to be comprehensive, it may not be complete.

#### **Food Insecurity**

AIM Outreach - food pantry  
 Christ's Table  
 Eastside Community Ministry - food bank/food pantry/produce market  
 Fellowship of Christ's Community  
 Hope to the Rescue Corporation - food pantry  
 Mid-Ohio Foodbank  
 Muskingum County Center for Seniors - congregate meals/home bound meals

#### **Housing & Homelessness**

Eastside Community Ministry  
 Homeless Hands of Zanesville  
 Salvation Army - shelter  
 Transitions Shelter (Women)  
 Trulight Ministries  
 Zanesville Metropolitan Housing Authority (ZMHA)

#### **Mental Health & Addiction**

BrightView - Zanesville Addiction Treatment  
 Cedar Ridge Behavioral Health Solutions

#### **Mental Health & Addiction (cont.)**

Frank's Way - recovery house  
 Genesis Behavioral Health  
 Genesis Drug and Alcohol Recovery Program and Support  
 Mental Health and Recovery Services Board  
 Muskingum Behavioral Health  
 Muskingum County Suicide Prevention Coalition  
 Naomi's House - recovery house  
 Ohio Psychiatric Associates, Inc.  
 Restorative Pathways Counseling, LLC  
 Spero Health  
 Vaping and Tobacco Coalition

#### **Nutrition & Physical Health**

Aldi  
 All-In Gym  
 Body Of Choice Gym  
 Campbell's Foodland  
 Concor Fitness  
 Countryside Bulk Foods  
 DG (Dollar General) Market  
 FlowFit Studios  
 German Farms Market  
 Hometown Fitness

#### **Nutrition & Physical Health (cont.)**

Hype Fitness Zanesville  
 Kroger  
 Miracle League of Muskingum Valley Ohio Inc  
 Muskingum Family YMCA  
 Muskingum Valley Park District  
 Planet Fitness  
 ReFuel Wellness  
 Riesbeck's Food Market  
 Rittberger North Market  
 Save A Lot  
 Schimmel Fitness  
 Southtown Gym  
 The Fieldhouse Family Sports and Wellness Center  
 True North Fitness  
 Walmart Supercenter  
 West Side Market  
 Witten Farm Market  
 Worthington Foods

#### **Transportation**

IC Cab Y-City  
 South East Area Transit (SEAT)

# CURRENT RESOURCES

## ADDRESSING PRIORITY HEALTH NEEDS

### NOBLE COUNTY



Information was gathered on assets and resources that currently exist in the community. This was done using feedback from the community and an overall assessment of the service area. While this list strives to be comprehensive, it may not be complete.

#### Access to Healthcare

Caldwell Family Health Center - Ohio Hills Health Services  
Noble County Eye Care  
Ohio Health Physician Group Primary Care  
Primary Care-Caldwell - Memorial Health System  
Reproductive Health and Wellness Program (RHWP)  
Southeast Ohio Breast and Cervical Cancer Project

#### Community & Social Services

Buckeye Hills Regional Council  
Caldwell Public Library  
CarFit - Noble County  
Guernsey, Monroe, Noble Counties (GMN) Tri-County Community Action Commission (CAC), Inc.  
Haven of Hope  
Helping Appalachian Rural People (H.A.R.P), Inc.  
Lunch Buddies  
Noble Board of Developmental Disabilities  
Noble County CARES (Community Access Resources Education Services)  
Noble County Chamber of Commerce & Tourism Bureau  
Noble County Commissioner  
Noble County Committee on Aging/Senior Center

#### Community & Social Services (cont.)

Noble County Courthouse  
Noble County Health Department  
Noble County Juvenile Court  
Noble County Sheriff's Office  
Noble County Veterans Service Commission  
Noble Family Violence Council, Inc.  
The Journal & Noble County Leader

#### Education

Caldwell Exempted Village School District  
Caldwell Head Start  
Caldwell Preschool  
Noble Learning Center  
Noble Local School District

#### Employment

Ohio Means Jobs - Noble County

#### Food Insecurity

Global Meals  
Homestyle Direct  
Lutheran Social Service of Central Ohio - mobile food pantry  
Mid-Ohio Foodbank  
Mom's Meals  
Noble County Senior Center - congregate meals/home delivered meals  
Nutrition for Longevity, Inc.  
Samaritan House of Noble County  
Senior Farmer's Market Nutrition Program - Buckeye Hills Regional Council

#### Housing & Homelessness

Noble County Fair Housing  
Noble Metropolitan Housing Authority

#### Mental Health & Addiction

Celebrate Recovery  
Guernsey & Noble County Suicide Prevention Coalition  
Noble Behavioral Health Choices

#### Nutrition & Physical Health

260 Grocery & More  
Caldwell Food Center Emporium  
Dollar General  
Food Center Convenience  
Freedom Fitness  
Liberty Market, LLC  
Lifestyle Gym  
Noble County Happy Time Pool  
Noble County Parks and Recreation Department  
PassionFIT  
Produce Stand  
Quick Exchange  
Save-A-Lot  
Ulterior Fitness

#### Transportation

Noble Taxi & Cab  
Region 8 Mobility Solution Center  
South East Area Transit (SEAT)

# CURRENT RESOURCES

## ADDRESSING PRIORITY HEALTH NEEDS

### PERRY COUNTY



Information was gathered on assets and resources that currently exist in the community. This was done using feedback from the community and an overall assessment of the service area. While this list strives to be comprehensive, it may not be complete.

#### Access to Healthcare

Annual Drive Thru Flu Clinic  
Fairfield Medical Center  
Family Health Services of East Central Ohio  
Hocking College Dental Hygiene Clinic  
Hopewell - Primary Health Care Clinic  
Perry County Family Practice  
Shrivers Pharmacy

#### Community & Social Services

Alzheimer's Alliance  
"Blessing Box" Project  
Buckeye Hills Regional Council  
Harcum House  
Hocking, Athens, Perry County Community Action (HAPCAP)  
Mount Aloysius Corp  
Mount Perry Presbyterian Church  
New Lexington Police Department  
PerCo Inc.  
Perry County Cancer Alliance  
Perry County Commissioners  
Perry County Courthouse  
Perry County District Library  
Perry County Emergency Management Agency  
Perry County Health Department  
Perry County Juvenile Court  
Perry County Ohio Chamber of Commerce  
Perry County Public Children Services Agency  
Perry County Senior Center  
Perry County Sheriff's Office  
Perry County Tribune  
Perry County Veterans Extravaganza  
Perry County Veterans Service Commission  
Saint Vincent de Paul Center  
Senior Expo and Health Fair  
South Central Power  
Survivor Advocacy Outreach Program (SAOP)  
The Perry County Press

#### Community & Social Services (continued)

Transitions Inc.  
Village of New Lexington

#### Education

Alpha Program  
Crooksville Exempted Village Schools  
Hocking College Perry Campus  
Little Lambs Learning Center  
Little Learners Preschool II  
Mama Bear Child Care  
Muskingum Valley Educational Service System  
New Lexington City School District  
New Lexington Head Start Center  
Northern Local School District  
Perry Preschool  
Southern Local School District

#### Employment

Ohio Means Jobs Center - Perry County

#### Food Insecurity

Commodity Supplemental Food Program (CSFP)  
Global Meals  
Homestyle Direct  
Hopewell-Madison Township Food Pantry  
Junction City Community Building - food pantry  
Meals on Wheels  
Mom's Meals  
New Lexington Food Pantry (PEAP) - Pike, Bearfield, Clayton, and Pleasant Townships  
Nutrition for Longevity, Inc.  
Perry County Senior Center - congregate dining  
Roseville Community Food Pantry  
Saint Vincent De Paul County Conference Food Pantry  
Senior Farmer's Market Nutrition Program - Buckeye Hills Regional Council  
Shawnee Farmer's market  
Somerset Food Pantry  
Southeast Ohio Regional Food Bank and Kitchen

#### Food Insecurity (cont.)

Southeast Perry County Food Pantry  
Thornville Food Pantry

#### Housing & Homelessness

Integrated Services for Behavioral Health - housing  
Perry County Home  
Perry Housing Coalition  
Perry Metropolitan Housing Authority

#### Mental Health & Addiction

Integrated Services for Behavioral Health - New Lexington  
Never Alone - Ohio  
Perry Behavioral Health Choices  
Perry County Suicide Prevention Coalition  
Stanton Villa

#### Nutrition & Physical Health

Amish Ridge Bulk Foods & Variety Store  
Carpenter's Market  
Clark's Grocery  
Crooksville Recreation Center  
Kroger  
Millcreek Market (Bulk Foods, Deli, Bakery)  
Perry County Bike Lending Program  
Perry County Park District  
Perry Recreation  
Ruff's IGA  
Save A Lot  
T C Market Inc.  
The G1 Fitness Complex  
Underground Athletics, LLC

#### Transportation

Perry County Mobility Management  
Perry County Transit  
Region 8 Mobility Solution Center  
Zero Loop



## STEPS 5-8

# INTEGRATE, DEVELOP, ADOPT, AND SUSTAIN IMPLEMENTATION STRATEGY/IMPROVEMENT PLAN (CHIP)



### IN THIS STEP, THE SOUTHEASTERN OHIO HEALTH IMPROVEMENT COLLABORATIVE (SOHIC) WILL:

- INTEGRATE IMPLEMENTATION STRATEGY/CHIP WITH COMMUNITY PARTNER, HEALTH DEPARTMENT, AND HOSPITAL PLANS
- ADOPT THE IMPLEMENTATION STRATEGY/CHIP
- UPDATE AND SUSTAIN THE IMPLEMENTATION STRATEGY/CHIP



**Public Health**  
Prevent. Promote. Protect.  
**Perry County**  
Health Department



**Public Health**  
Prevent. Promote. Protect.  
**MORGAN COUNTY HEALTH DEPT.**



**Public Health**  
Prevent. Promote. Protect.  
**Zanesville-Muskingum County**



# GENESIS SERVICE AREA (GSA)

## NEXT STEPS

The Community Health Needs Assessment (CHNA) and this resulting Implementation Strategy/Improvement Plan (CHIP) identify and address significant community health needs and help guide community benefit activities. This Implementation Strategy/CHIP explains how the Southeastern Ohio Health Improvement Collaborative (SOHIC) plans to address the selected priority health needs identified by the CHNA.

This Implementation Strategy/CHIP report was adopted by Genesis HealthCare System (GHS) leadership in May 2025.

This report is widely available to the public on the GHS website:

<https://www.genesishcs.org/our-impact/about-us/community>

Written comments on this report are welcomed and can be made by emailing:

[lsupplee@genesishcs.org](mailto:lsupplee@genesishcs.org).

### EVALUATION OF IMPACT

SOHIC will monitor and evaluate the programs and actions outlined above. We anticipate the actions taken to address significant health needs will improve health knowledge, behaviors, and status, increase access to care, and overall help support good health. SOHIC is committed to monitoring key indicators to assess impact. Our reporting process includes the collection and documentation of tracking measures, such as the number of people reached/served and collaborative efforts to address health needs. A review of the impact of SOHIC's actions to address these significant health needs will be reported in the next scheduled CHNA.

### ADDITIONAL HEALTH NEEDS NOT DIRECTLY ADDRESSED

Since SOHIC cannot directly address all the health needs present in the community, we will concentrate our resources on those health needs where we can effectively impact our region given our areas of focus and expertise. Taking existing organization and community resources into consideration, SOHIC will not directly address the remaining health needs identified in the CHNA, including but not limited to crime and violence, access to childcare, environmental conditions, internet access, injuries, and HIV/AIDS and STIs. We will continue to look for opportunities to address community needs where we can make a meaningful contribution. Community partnerships may support other initiatives that SOHIC cannot independently lead to address the other health needs identified in the 2024 CHNA.

# APPENDIX A INTERNAL REVENUE SERVICE (IRS) REQUIREMENTS CHECKLIST: IMPLEMENTATION STRATEGY

## MEETING THE IRS REQUIREMENTS FOR THE IMPLEMENTATION STRATEGY

The Internal Revenue Service (IRS) requirements for an Implementation Strategy serve as the official guidance for IRS compliance. The following pages demonstrate how this Implementation Strategy/ Improvement Plan meets those IRS requirements.



**Public Health**  
Prevent. Promote. Protect.  
**Perry County**  
Health Department



**Public Health**  
Prevent. Promote. Protect.  
**MORGAN COUNTY HEALTH DEPT.**



**Public Health**  
Prevent. Promote. Protect.  
**Zanesville-Muskingum County**

# APPENDIX A: IRS IMPLEMENTATION STRATEGY REQUIREMENTS CHECKLIST



## INTERNAL REVENUE SERVICE REQUIREMENTS FOR IMPLEMENTATION STRATEGIES

YES	PAGE #	IRS REQUIREMENTS CHECKLIST	REGULATION SUBSECTION NUMBER	NOTES/ RECOMMENDATIONS
✓	19-21	<p>(2) Description of how the hospital facility plans to address the health needs selected, including:</p> <ul style="list-style-type: none"> <li>i. Actions the hospital facility intends to take and the anticipated impact of these actions;</li> <li>ii. Resources the hospital facility plans to commit; and</li> <li>iii. Any planned collaboration between the hospital facility and other facilities or organizations in addressing the health need.</li> </ul>	<p>(c)(2)</p> <p>(c)(2)(i)</p> <p>(c)(2)(ii)</p> <p>(c)(2)(iii)</p>	
✓	31	<p>(3) Description of why a hospital facility is not addressing a significant health need identified in the CHNA.</p> <p><i>Note: A “brief explanation” is sufficient. Such reasons may include resource constraints, other organizations are addressing the need, or a relative lack of expertise to effectively address the need.</i></p>	(c)(3)	
✓	Throughout report	<p>(4) For those hospital facilities that adopted a joint CHNA report, a joint IS may be adopted that meets the requirements above. In addition, the joint IS must:</p> <ul style="list-style-type: none"> <li>i. Be clearly identified as applying to the hospital facility;</li> <li>ii. Clearly identify the hospital facility’s role and responsibilities in taking the actions described in the IS and the resources the hospital facility plans to commit to such actions; and</li> <li>iii. Include a summary or other tool that helps the reader easily locate those portions of the strategy that relate to the hospital facility.</li> </ul>	<p>(c)(4)</p> <p>(c)(4)(i)</p> <p>(c)(4)(ii)</p> <p>(c)(4)(iii)</p>	Strategies that the hospital is collaborating on are indicated throughout the report.
✓	3, 31	<p>(5) An authorized body adopts the IS on or before the 15th day of the fifth month after the end of the taxable year in which the CHNA was conducted and completed, regardless of whether the hospital facility began working on the CHNA in a prior taxable year.</p> <p><b>Exceptions (if applicable):</b></p> <p><b>Transition Rule (if applicable):</b></p>	(c)(5)	



# APPENDIX B PUBLIC HEALTH ACCREDITATION BOARD (PHAB) CHECKLIST: IMPROVEMENT PLAN (CHIP)

## MEETING THE PHAB REQUIREMENTS FOR THE CHIP

The PHAB Standards & Measures serve as the official guidance for PHAB national public health department accreditation and include requirements for the completion of Community Health Assessments (CHAs) and CHIPs for local health departments. The following page demonstrates how this CHIP meets the PHAB requirements.



**Public Health**  
Prevent. Promote. Protect.  
**Perry County**  
Health Department



**Public Health**  
Prevent. Promote. Protect.  
**MORGAN COUNTY HEALTH DEPT.**



**Public Health**  
Prevent. Promote. Protect.  
**Zanesville-Muskingum County**

# APPENDIX B:

## PHAB COMMUNITY HEALTH IMPROVEMENT PLAN (CHIP) REQUIREMENTS CHECKLIST



PUBLIC HEALTH ACCREDITATION BOARD (PHAB) REQUIREMENTS FOR CHIPs			
YES	PAGE #	PHAB REQUIREMENTS CHECKLIST	NOTES/ RECOMMENDATIONS
✓	4	<b>MEASURE 5.2.1 A: Engage partners and members of the community in a community health improvement process.</b> 1. A collaborative process for developing the community health improvement plan (CHIP), which includes: <ul style="list-style-type: none"> <li>a. A list of participating partners involved in the CHIP process. Participation must include: i. At least 2 organizations representing sectors other than public health. ii. At least 2 community members or organizations that represent populations that are disproportionately affected by conditions that contribute to health risks or poorer health outcomes.</li> </ul>	
✓	7-29	<ul style="list-style-type: none"> <li>b. Review of information from the community health assessment.</li> </ul>	
✓	19-21	<ul style="list-style-type: none"> <li>c. Review of the causes of disproportionate health risks or health outcomes of specific populations.</li> </ul>	
✓	12-17	<ul style="list-style-type: none"> <li>d. Process used by participants to select priorities.</li> </ul> The CHIP process must address the jurisdiction as described in the description of Standard 5.2.	
✓	19-21	<b>MEASURE 5.2.2 A: Adopt a community health improvement plan.</b> 1. A community health improvement plan (CHIP), which includes all of the following: <ul style="list-style-type: none"> <li>a. At least two health priorities.</li> </ul>	
✓	19-21	<ul style="list-style-type: none"> <li>b. Measurable objective(s) for each priority.</li> </ul>	
✓	19-21	<ul style="list-style-type: none"> <li>c. Improvement strategy(ies) or activity(ies) for each priority. i. Each activity or strategy must include a timeframe and a designation of organizations or individuals that have accepted responsibility for implementing it. ii. At least two of the strategies or activities must include a policy recommendation, one of which must be aimed at alleviating causes of health inequities.</li> </ul>	
✓	22-29	<ul style="list-style-type: none"> <li>d. Identification of the assets or resources that will be used to address at least one of the specific priority areas.</li> </ul>	
✓	31	<ul style="list-style-type: none"> <li>e. Description of the process used to track the status of the effort or results of the actions taken to implement CHIP strategies or activities.</li> </ul> The CHIP must address the jurisdiction as described in the description of Standard 5.2.	A detailed work plan (living document) has been developed that included strategies, SMART objectives, annual activities, indicators, partners, and priority populations.

# APPENDIX C

## REFERENCES



**Public Health**  
Prevent. Promote. Protect.  
**Perry County**  
Health Department



**Public Health**  
Prevent. Promote. Protect.  
**MORGAN COUNTY HEALTH DEPT.**



**Public Health**  
Prevent. Promote. Protect.  
**Zanesville-Muskingum County**

## **APPENDIX C:**

# **REFERENCES**

<sup>1</sup>U.S. Census Bureau, Decennial Census, P1, 2018-2022. [Http://Data.Census.Gov/](http://Data.Census.Gov/)

<sup>2</sup>County Health Rankings & Roadmaps, 2023 Data Set, <http://www.Countyhealthrankings.org/>

<sup>3</sup>U.S. Census Bureau, American Community Survey, Dp05, 2018-2022 5-Year Estimate.  
[Http://Data.Census.Gov/](http://Data.Census.Gov/)

<sup>4</sup>U.S. Census Bureau, American Community Survey, Dp02, 2018-2022 5-Year Estimate.  
[Http://Data.Census.Gov/](http://Data.Census.Gov/)

<sup>5</sup>U.S. Census Bureau, Decennial Census, S1601 American Community Survey, 2018-2022 5-Year Estimate. [Http://Data.Census.Gov/](http://Data.Census.Gov/)

<sup>6</sup>County Health Rankings & Roadmaps, 2024 Data Set, <http://www.Countyhealthrankings.org/>

<sup>7</sup>Health Resource Service Administration. Health Professional Shortage Areas. Retrieved from:  
<https://data.hrsa.gov/tools/shortage-area/hpsa-find>





**Public Health**  
Prevent. Promote. Protect.  
**Perry County**  
Health Department



**Public Health**  
Prevent. Promote. Protect.  
**MORGAN COUNTY HEALTH DEPT.**



**Public Health**  
Prevent. Promote. Protect.  
**Zanesville-Muskingum County**



[www.moxleypublichealth.com](http://www.moxleypublichealth.com)  
[stephanie@moxleypublichealth.com](mailto:stephanie@moxleypublichealth.com)